

# Internet Valet on a Mac for Remote Access Service

In order to connect to the Internet with your Macintosh you need to have a TCP application and a PPP application installed on your Mac. For example you can have any of the following combinations:

- Internet Valet
- MacTCP and Config PPP
- MacTCP and FreePPP
- Open Transport (TCP/IP) and Config PPP
- Open Transport (TCP/IP) and Free PPP
- Open Transport via iMac's Internet Setup Assistant

## How to Setup Internet Valet

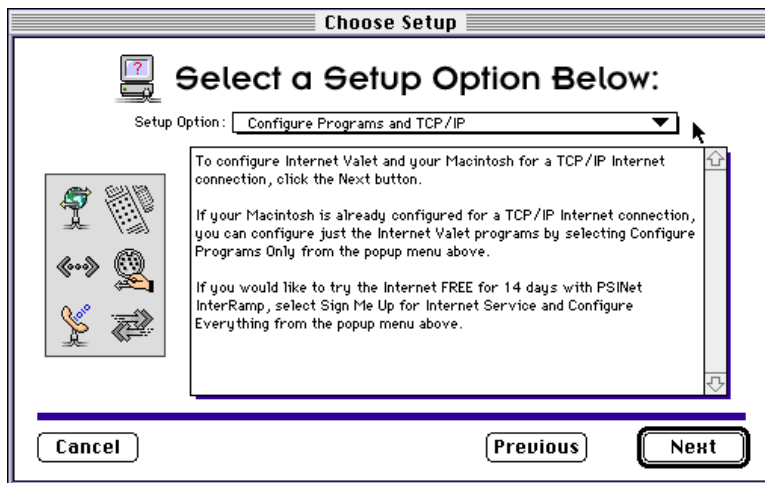


Fig. 1

Figure 1 is the Second Screen you will see when you run Internet Valet.

Click on the Setup Option menu and choose CONFIGURE PROGRAMS AND TCP/IP.

When you are done click on the Next button to Continue.

Fig. 2

Enter your personal information in Figure 2 and click on the next button to continue.

# Internet Valet on a Mac for Remote Access Service (cont'd)

**Configure Applications**

**Enter Your Internet Information:**

Email Address:

Password:

SMTP Server:

POP3 Server:

NNTP Server:

2 of 4

Fig. 3

**Email Address:** username@psinet.com  
**Password:** The password you were assigned, case sensitive.  
**SMTP Server:** smtp.psinet.com  
**POP3 Server:** pop3.psinet.com  
**NNTP Server:** usenet.psinet.com

Click on the next button to continue.

**Configure TCP/PPP**

**Enter Your TCP/IP Information:**

IP Type:  Manual  Server

IP Address:

Gateway IP Address:  Subnet mask:

Primary Domain Name:  Secondary Domain Name:

Primary DNS IP Address:  Secondary DNS IP Address:

3 of 4

Fig. 4

**IP Type:** Select Server  
**Subnet mask:** 255.0.0.0  
**Primary & Secondary Domain Names:** ". "  
**Primary DNS IP Address:** 38.8.219.2  
**Secondary DNS IP Address:** 38.8.220.2

Click on the next button to continue.

## Internet Valet on a Mac for Remote Access Service (cont'd)

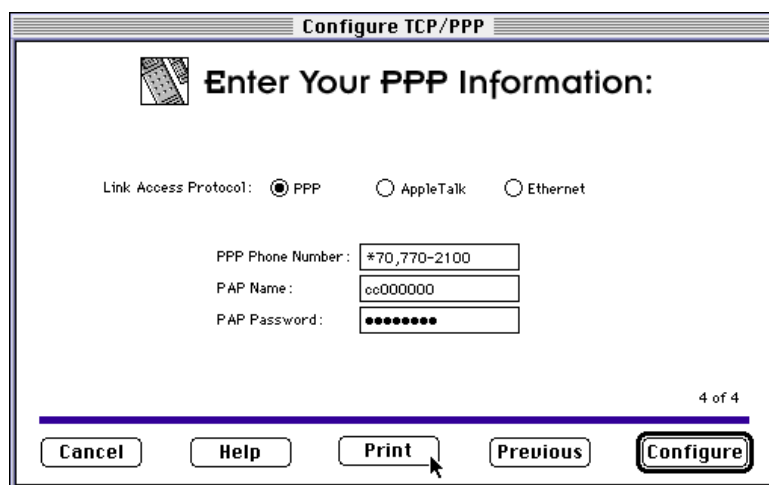


Fig. 5

<b>Link Access Protocol:</b>	PPP
<b>PPP Phone Number:</b>	See FaxBack document, code 1002, for a listing of all Access Numbers. Dial 518-283-8860 for the FaxBack server or email numbers-info@psi.com for the listing.
<b>Pap Name:</b>	Enter your Account ID
<b>PAP Password:</b>	Enter your password, case sensitive

Now click on the 'Configure' Button.

This will configure your Internet Valet Programs, Valet Palette and Control Panels.

To run Internet Valet click on the Internet Valet program icon. When it brings up the palette, choose the program you want to run. Internet Valet will dial out and make the connection.